



CONTROLLERS SMARTLINE® CONTROLLER

☑ Two Controllers In One

The “Basic” mode programs exactly like the conventional controllers used by most manufacturers. There’s no need to learn a new method. The “Smart” mode is where the power lies. Combined with our SLW Series Weather Stations, SmartLine becomes an ET-Based water-saving controller that automatically adjusts watering times 365 days a year.

☑ Smart Mode

ET Watering adjusts the duration, frequency, and soak time by several factors. Weather Data combined with geographical location, sprinkler type, plant type, soil type, and a fine tuning option, enables your SmartLine controller to make precise watering decisions.

☑ Access Your SmartLine Controller From Virtually Anywhere

The days of irrigation controllers being programmed once, and left alone for months, is over. Adding the SmartLink Network gives you access to your SmartLine controllers via your Computer, Tablet, or Smartphone. Irrigation Management made simple, affordable, and packed with features.

☑ Backlit LCD/Real Time Clock/Calendar & Non-Volatile Program Memory

No flashlight required in dark basements and garages. No battery required! On board memory chip retains time, date and program information even during a power outage

☑ Omit Times/Days/Dates Seasonal % Adjust by Month by Program

Automatically comply with local water restrictions; eliminate irrigated water lost to evaporation in the heat of the day; stop irrigation on lawn maintenance days; never water on the date of an annual event (ex: July 4th). A monthly watering budget % can be set up by program to automatically adjust zone run times for seasonal changes.



☑ Advanced Menu

The Advanced Menu contains 17 tools, ranging from diagnostics, troubleshooting, and advanced water management tools. Below only scratches the surface.

☑ Built-In Valve Locator

Locate hidden valves by simply listening for the audible chatter of the solenoid created by a unique electrical frequency. (U.S. Pat #7406363)

☑ On-Board Multi-Meter

Displays the electrical current reading of each zone for quick troubleshooting and a proactive approach to maintenance.

☑ Master Valve/Pump Settings

Achieve hydraulic control with settings for zone-to-zone delays, master valve timing, and master valve On/Off by zone

☑ Backtrack Stored Program Grown-In Program Feature

Allows you to easily store a default program and retrieve the saved program in the event someone improperly reprograms the controller. Allows you to set up a temporary program to grow in new plant material then automatically switch to a day to day program when you decide.

☑ Runoff Eliminator

Eliminate runoff by setting the maximum allowable run time and minimum soak time by program



Save Water. Give Life.
1,000 gallons
given per controller



CONTROLLERS SMARTLINE® CONTROLLER



SL1600 4-Zone Base Model **SL1620** 12-Zone Fixed Model **SL4800** 12-Zone Base Model

Base # of Zones	4	20	12
Maximum # of Zones	16	20	48
Compatible Expansion Modules	SLM4 SLM12-1600	-	SLM12-4800
Outdoor Rated	✓	✓	✓
Electrical	120VAC	120VAC	120VAC
Lock	✓	✓	✓
Programs	4	4	4
Start Times	8	8	8
Simultaneous Solenoid Operation	3	3	5
SmartLink Compatible	✓	✓	✓
Backlit LCD	✓	✓	✓
SmartWire Compatible	-	-	-
ET Based Scheduling	✓	✓	✓
Dimensions	9 1/8" W x 10 1/2" H x 4" D 23.2 cm x 25.7 cm x 10.2 cm		15" W x 16 1/2" H x 5 7/16" D 38.1 cm x 41.9 cm x 13.8 cm
Electrical	Input: 120 VAC/60Hz Output: 24 VAC/1.6 Amps Fuse: 1.0A slow blow		Input: 120 VAC/60Hz Output: 24 VAC/2 Amps Fuse: 1.5A slow blow
International Model	E-SL1600	E-SL1620	E-SL4800

SMARTLINK® BUNDLES WITH 1 YEAR SERVICE PLAN (INCLUDES CONTROLLER, ALL STATION MODULES, SLW5 WEATER STATION AND SMARTLINK AIRCARD)

MODEL	DESCRIPTION
SL1616-1YR-BDL-M1NA	SL1616 1 Year Bundle with 16 Zones for LTE CAT M1 Cellular Network
SL1616-1YR-BDL-FLOW-M1NA	SL1616 1 Year Bundle with Flow with 16 Zones for LTE CAT M1 Cellular Network
SL4824-1YR-BDL-M1NA	SL4824 1 Year Bundle with 24 Zones for LTE CAT M1 Cellular Network
SL4824-1YR-BDL-FLOW-M1NA	SL4824 1 Year Bundle with Flow with 24 Zones for LTE CAT M1 Cellular Network
SL4848-1YR-BDL-M1NA	SL4848 1 Year Bundle with 48 Zones for LTE CAT M1 Cellular Network
SL4848-1YR-BDL-FLOW-M1NA	SL4848 1 Year Bundle with Flow with 48 Zones for LTE CAT M1 Cellular Network



CONTROLLERS SMARTLINE® CONTROLLER

BASIC FEATURES

- Upgradable to SmartLink® web-based access (SL1600/SL4800) See page 17
- 4 independent programs - each stacks or can operate simultaneously
- 8 start times per program
- Indoor/outdoor rated
- Zone run times settable from 1 min. to 9 hrs. 55 min.
- Rain/freeze sensing on/off button with tri-color LED indicator
- Rain delay of 1 - 7 days
- SLW5/SLW1 Weather Station rain delay programmable from 0 - 99 hours
- Seasonal % adjust by program, by month
- Omit time of day window, day(s) of week, and up to 7 calendar dates
- Programmable zone-to-zone delay 1 min. - 3 hrs.
- Watering days: custom days of the week, odd/even, or interval days
- Run/Soak cycles by program
- Large backlit LCD display
- Non-volatile memory - with no battery required
- Internal transformer with pre-installed 6' line cord (SL1600, SL1620 only)
- 2 simultaneous watering modes: basic mode and smart mode. Each zone can run in either mode independent of other zones, even in the same program.
- Basic mode: user controlled conventional operation
- Smart mode: daily automatic programming adjustments
- 5 user-selectable languages
- Simultaneous solenoid operation: 3 solenoids (SL1600), 5 solenoids (SL4800)

SMART WATERING FEATURES

- ZIP Code input or latitude input
- Sprinkler type input
- Plant type input
- Soil type input
- More/less ET tuning
- Watering run times
- Review menu displays accumulated ET deficits by zone
- Display maximum run time and minimum soak time
- Displays temperature readings (daily high/low) for previous 5 days
- Accumulates total run times by zone from the last reset date
- Clear deficits for all zones
- Extended rain delay programmable from 0 - 99 hours

ADDITIONAL FEATURES

- Zone-to-zone delay
- Master valve timing sequence with zone valve programmable
- Master valve/pump start operation assignable On/Off by zone
- Clear program function
- Clear all function
- Grow-in program

MANUAL OPERATION

- Manual test runs each zone with zone run times from 10 sec. - 10 min.
- Manual zone operation of a single zone (1 min. to 9 hrs. 55 min.)
- Push button manual start of a program from control panel

ON-SITE DIAGNOSTIC/ TROUBLESHOOTING FEATURES

- Fault review displays all faults, including open and shorted zones
- Test function using on-board multi-meter
- Built-in valve locator
- Backtrack Stored Program™
- Two independently programmed master valves
- Normally open or normally closed master valve operation
- Real time milliamp display
- Flow sensor data review (requires SmartLink® Aircard)
- Real time flow display (requires SmartLink® Aircard)

Enhance your SmartLine® Controller with irrigation management tools.

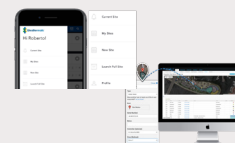


SLW5 Wireless Weather Station
Turns the SmartLine® Controller into a EPA Water Sense Certified system.



SmartLink™ AirCard Standard / with Flow
Connects your SmartLine controller to the SmartLink™ Network.

The SmartLink™ Network
Access, and manage your SmartLine® Controller with the truly affordable web-based SmartLink™ Network.



SLFSI-S / SLFSI-T / SLFSI-B Flow Sensor
Adds complete flow sensing capabilities to the SmartLine® Controller when connected to the SmartLink™ Network.