



VALVES

QUICK COUPLING VALVES

FEATURES

- ✓ ACME® threads standard for slow and steady flow control instead of immediate on/off.
- ✓ Rubber cover
- ✓ Optional locking cover available
- ✓ Optional lavender rubber cover identifies reclaimed water site - molded in "RECLAIMED WATER - DO NOT DRINK": in English and Spanish.

QUICK COUPLING KEY DIMENSIONS

MODEL	FOR VALVE MODELS	THREAD SIZE		
		MALE	FEMALE	HEIGHT
7640-QCVKEY	All models	$\frac{3}{4}$ " 25.4 mm	$\frac{1}{2}$ " 19.05 mm	$5 \frac{1}{4}$ " 13.3 cm
7641-QCVKEY	All models	1" 19.05 mm	$\frac{3}{4}$ " 12.7 mm	$5 \frac{1}{4}$ " 13.3 cm

QUICK COUPLING VALVE DIMENSIONS

Bottom Pipe Thread: 1" (25.4 mm)
Overall Height: $3 \frac{3}{4}$ " (9.5 cm)

FLOW RANGE

Max Capacity: 20 GPM (75.7 L/M)



Quick Coupling Valve Specifications

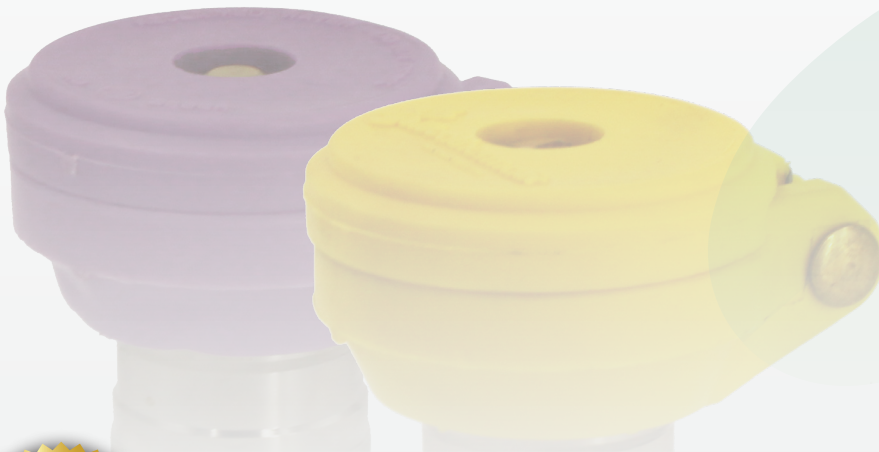
MODEL	DESCRIPTION	RUBBER COVER	LOCKING COVER	WARNING COVER
7642-QCVKEY	Quick Coupling Valve with Yellow Non-Locking Cover, 1" NPT (25.4 mm)	•		
7643-QCVLKEY	Quick Coupling Valve with Yellow Locking Cover, 1" NPT (25.4 mm)	•	•	•
7644-QCVNP	Quick Coupling Valve with Lavender Non-Locking Cover, 1" NPT (25.4 mm)	•		
7645-QCVLNP	Quick Coupling Valve with Lavender Locking Cover, 1" NPT (25.4 mm)	•	•	•

Quick Coupler Keys Swivel Elbows (NPT) Specifications

MODEL	DESCRIPTION
8810-ELL	$\frac{3}{4}$ " Female NPT x $\frac{3}{4}$ " Male Hose
8811-ELL	1" Female NPT x $\frac{3}{4}$ " Male Hose
8812-ELL	1" Female NPT x 1" Male Hose

Quick Coupling Key Specifications

MODEL	DESCRIPTION
7640-QCVKEY	Quick Coupling Key, $\frac{3}{4}$ " male x $\frac{1}{2}$ " female
7641-QCVKEY	Quick Coupling Key, 1" male x $\frac{3}{4}$ " female
8649-QCVKEY	QCV Locking Cover Key



100 gallons given per valve

Our mission is to deliver clean drinking water to thousands of families in need, and to inspire our partners to put water first in irrigation, design, installation, and maintenance.

Copyright 2020 Weathermatic. All Rights Reserved AD4045_revD

