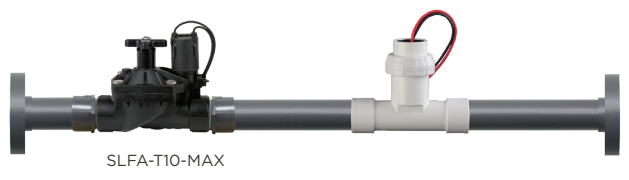


SLFA

Flow Assemblies

FEATURES

- Pre-sized with manufacturers required pipe length
- Includes master valve, flow sensor, schedule 80 pipe length and flanges and gasket/bolt kits
- Avoid errors in flow run pipe length size and fitting assembly
- Ready to glue and install



SLFA-T10-MAX

FLOW SENSOR WITH MAX VALVE SPECIFICATIONS

MODEL	DESCRIPTION
SLFA-T10-MAX	1" Flanged Flow Assembly with MAX-DW-10 Master Valve and SLFA-T10 Flow Sensor
SLFA-T15-MAX	1 1/2" Flanged Flow Assembly with MAX-DW-15 Master Valve and SLFA-T15 Flow Sensor
SLFA-T20-MAX	2" Flanged Flow Assembly with MAX-DW-20 Master Valve and SLFA-T20 Flow Sensor

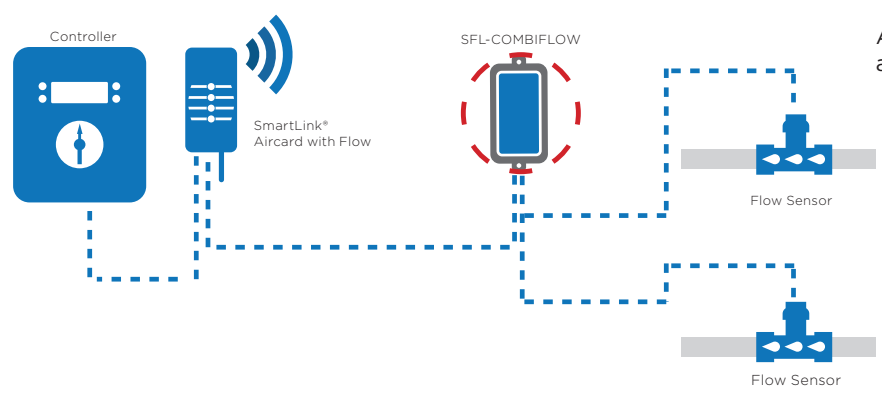
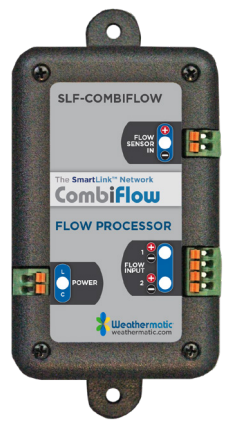
SLF-COMBIFLOW

Flow Processor

The SLF-CombiFlow is a unique signal controlled device that conditions and scales the signals from two digital flow sensors and combines them into one scalable digital output. The SmartLink™ Flow Aircard then perceives the signal is coming from a single flow sensor. It is compatible with the SLFSI Series Flow Sensors and most other sensors producing a square or sine wave output proportional to the rate of flow.

COMBIFLOW SPECIFICATIONS

MODEL	DESCRIPTION
SLF-COMBIFLOW-100	Combines 2 separate flow Sensor's data to be used by 1 SmartLink® Flow Aircard
SLF-COMBIFLOW-100-10-10	Combiner for 2 sensors / 1 controller - Pre-programmed 1" x 1"
SLF-COMBIFLOW-100-15-10	Combiner for 2 sensors / 1 controller - Pre-programmed 1.5" x 1"
SLF-COMBIFLOW-100-20-10	Combiner for 2 sensors / 1 controller - Pre-programmed 2" x 1"
SLF-COMBIFLOW-100-30-10	Combiner for 2 sensors / 1 controller - Pre-programmed 3" x 1"
SLF-COMBIFLOW-100-15-15	Combiner for 2 sensors / 1 controller - Pre-programmed 1.5" x 1.5"
SLF-COMBIFLOW-100-20-15	Combiner for 2 sensors / 1 controller - Pre-programmed 2" x 1.5"
SLF-COMBIFLOW-100-30-15	Combiner for 2 sensors / 1 controller - Pre-programmed 3" x 1.5"
SLF-COMBIFLOW-100-20-20	Combiner for 2 sensors / 1 controller - Pre-programmed 2" x 2"
SLF-COMBIFLOW-100-30-20	Combiner for 2 sensors / 1 controller - Pre-programmed 3" x 2"
SLF-COMBIFLOW-100-30-30	Combiner for 2 sensors / 1 controller - Pre-programmed 3" x 3"



Additional SLF-COMBIFLOW units can be added for additional flow sensor inputs.



SMARTLINK FLOW SENSOR ACCESSORIES

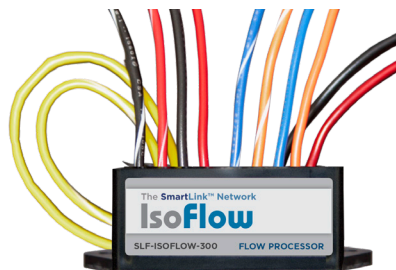


SLF-ISOFLOW

Signal Control Devices

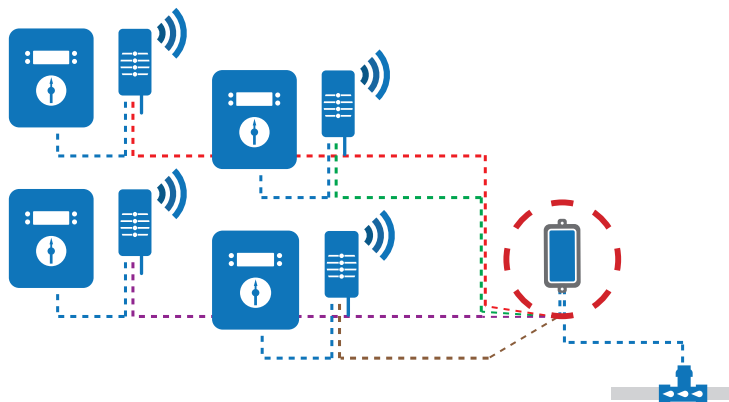
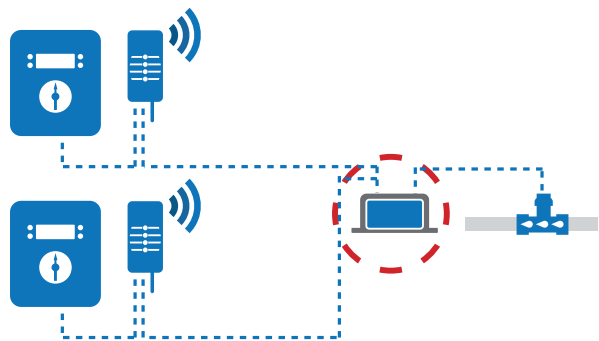
The SLF-ISOFLOW-302 and SLF-ISOFLOW-304 are signal control devices that receive the signal from a single SLFSI flow sensor and provide two electrically isolated outputs. These outputs can then separately be connected to 2 - 4 SmartLink® Flow Aircards.

The SLF-ISOFLOW-304 enables up to 4 SmartLine®/SmartLink® Flow Aircard to share a single SLFSI flow sensor.



SLF-ISOFLOW-302

ISOFLOW SPECIFICATIONS	
MODEL	DESCRIPTION
SLF-ISOFLOW-302	Enables 2 SmartLink® Flow Aircards to share 1 SLFSI Flow Sensor
SLF-ISOFLOW-304	Enables 3 to 4 SmartLink® Flow Aircards to share 1 SLFSI Flow Sensor



SMARTLINK ACCESSORIES

MODEL	DESCRIPTION
SLF-SIMFLOW	Flow Simulator with 36" Leads
SLF-DISPLAYFLOW	Digital Display Totalizer Inhousing
SLF-PCT-120	Hydrometer Pulse Converter
SLFLOW-WIRE-193-1000	19 Gauge, 3 wires, 1000 ft





SLF-WIRERIDE

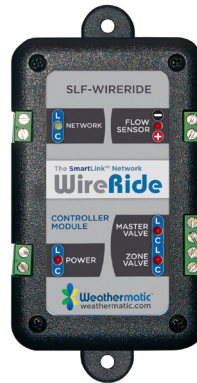
The SLF-WIRERIDE enables installation of a new master valve and flow sensor (or hydrometer) on an irrigation system, without the need of running new wire back to the irrigation controller. With WireRide, the new master valve and flow sensor (or hydrometer) essentially “hitch a ride” back to the controller using a nearby preexisting zone wire.

How it Works

The WireRide Controller Module mounts near the SmartLine® controller. It routes the master valve, flow sensor (or hydrometer), and the nearby zone valve to their corresponding location in the SmartLine® controller and to the SmartLink® Flow Aircard.

A simple walk-through of the example below:

- Install the new master valve and flow sensor (or hydrometer).
- Locate a nearby preexisting zone Valve.
- Connect the zone valve, new master and flow Sensor (or hydrometer) to the WireRide field module.
- The existing zone Valve wire is now being used by the field module to connect to the controller module.
- The controller module mounts next to the SmartLine® controller and routes power and flow signals to the appropriate devices.



SLF-WIRERIDE



SLF-WIRERIDE

FLOW ACCESSORIES SPECIFICATIONS

MODEL	DESCRIPTION
SLF-WIRERIDE	Add SLFSI Flow Sensor and a Master Valve Without Running New Wire to the Controller
SLF-WIRERIDE-HYD	Hydrometer Communication on Existing Wire
SLF-PCT-120	Hydrometer Pulse Converter

