

D50 SERIES

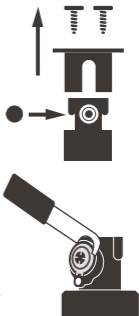
Full Circle Golf Rotor

NOZZLE INSTALLATION GUIDE

STEP 1: REMOVE DRIVE ASSEMBLY

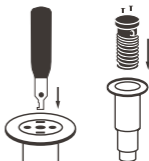
STEP 2: INSTALL NEW NOZZLE

- Remove screws (2) on top of nozzle cap.
- Pull off nozzle cap.
- Snap in correct nozzle. (see Performance Chart).
- To remove nozzle, pull out using snap ring tool or screwdriver.



STEP 3: INSTALL DRIVE ASSEMBLY

- Reinstall nozzle cap with screws (2).
- Install new snap ring under cap.
- Place assembly in body.
- Push assembly until flush.
- Using tool push down in snap ring slots (2) until it clicks in.



D50 SERIES

Performance Data

Nozzle	Pressure			Discharge	Precipitation Rate ¹		Pressure			Max. Radius*	Discharge	Precipitation Rate ¹	
	PSI	ft.	gpm		in/hr ■	in/hr ▲	BAR	kPa	m			L/s	m ³ /hr
8 Black	60	37	7.9	0.56	0.64	4.1	410	11.2	0.5	1.8	14.18	16.37	
	70	37	10.1	0.71	0.82	4.8	480	11.2	0.6	2.3	18.13	20.93	
	80	-	-	-	-	5.5	550	-	-	-	-	-	
12 Gray	60	39	9.9	0.63	0.72	4.1	410	11.9	0.6	2.2	15.99	18.47	
	70	39	11.5	0.73	0.84	4.8	480	11.9	0.7	2.6	18.58	21.45	
	80	-	-	-	-	5.5	550	-	-	-	-	-	
14 Yellow	60	47	13.8	0.60	0.69	4.1	410	14.3	0.9	3.1	15.35	17.3	
	70	47	15.4	0.67	0.78	4.8	480	14.3	1.0	3.5	17.13	19.78	
	80	-	-	-	-	5.5	550	-	-	-	-	-	
16 Orange	60	51	16.9	0.63	0.72	4.1	410	15.5	1.1	3.8	15.97	18.44	
	70	55	18.3	0.58	0.67	4.8	480	16.7	1.2	4.2	14.87	17.17	
	80	-	-	-	-	5.5	550	-	-	-	-	-	
18 Brown	60	53	19.8	0.68	0.78	4.1	410	16.1	1.2	4.5	17.32	20.00	
	70	57	20.2	0.60	0.69	4.8	480	17.3	1.3	4.6	15.28	17.64	
	80	-	-	-	-	5.5	550	-	-	-	-	-	
19 Red	60	55	19.7	0.63	0.72	4.1	410	16.7	1.2	4.5	16.00	18.48	
	70	55	21.1	0.67	0.78	4.8	480	16.7	1.3	4.8	17.14	19.79	
	80	59	22.2	0.61	0.71	5.5	550	18.0	1.4	5.0	15.59	18.00	
25 Blue	60	59	22.6	0.63	0.72	4.1	410	17.9	1.4	5.1	15.95	18.42	
	70	67	26.6	0.57	0.66	4.8	480	20.4	1.7	6.0	14.56	16.81	
	80	69	28.5	0.58	0.67	5.5	550	21.0	1.8	6.5	14.63	16.90	
28 Green	60	62	28.0	0.70	0.81	4.1	410	18.8	1.8	6.4	17.90	20.67	
	70	71	30.8	0.59	0.68	4.8	480	21.6	1.9	7.0	15.01	17.34	
	80	72	32.4	0.60	0.70	5.5	550	21.9	2.0	7.4	15.28	17.64	

¹ Precipitation rates for square and triangular spacing calculated at 50% of diameter for half-circle operation. Assumes zero wind for precipitation and radius. Adjust for local conditions.